

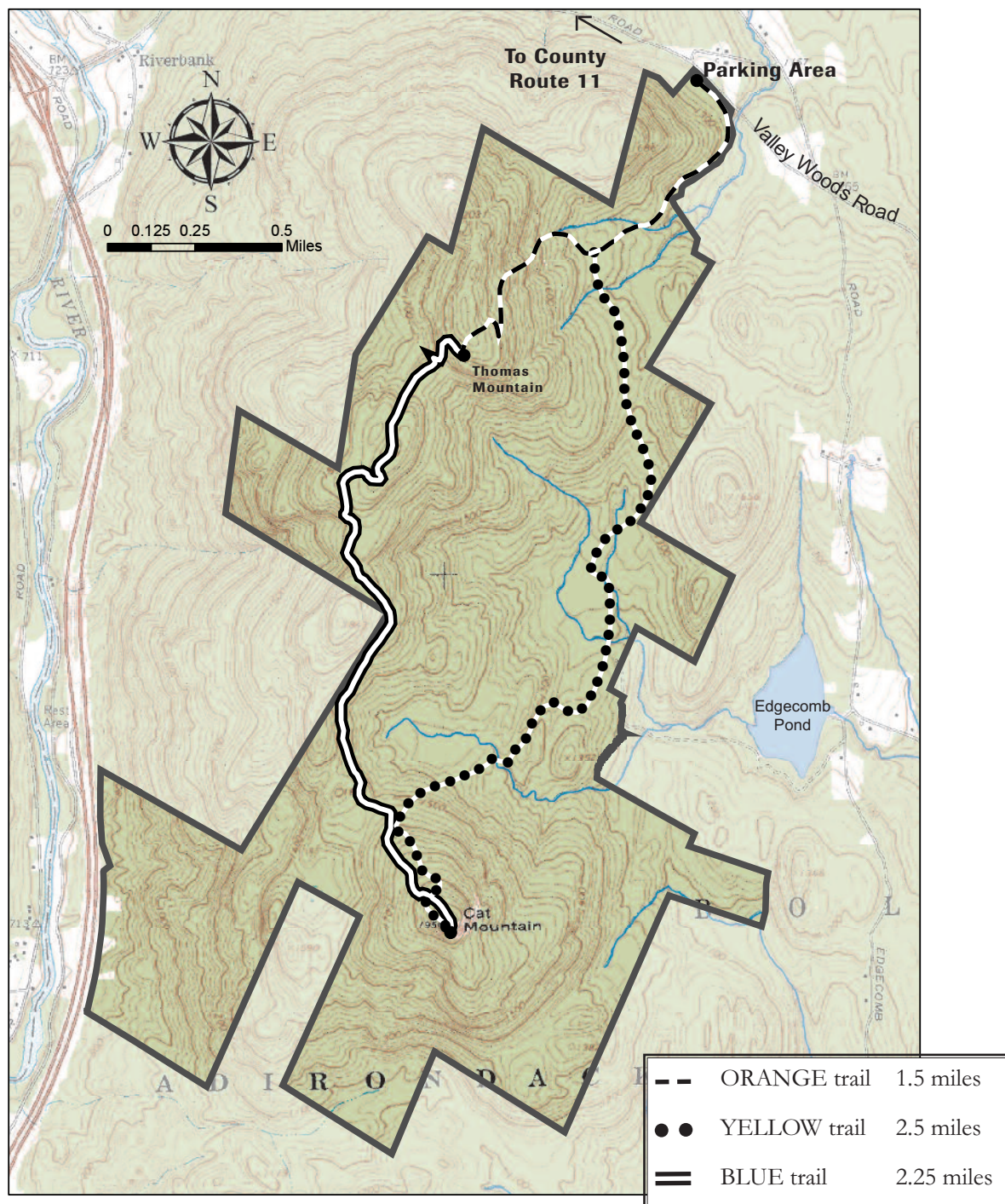
A Brief Background of Cat and Thomas Mountains

Just a five-minute drive from Bolton Landing, the trails to the summits of Cat and Thomas Mountains reward hikers with outstanding views of Lake George's south and central basins and the southern Adirondacks.

The orange trail to Thomas Mountain follows a logging road as it winds up the mountain through varying forest types and ends at a quaint cabin that takes in the region's scenic beauty. The yellow trail to Cat Mountain also follows a logging road, past a number of wetlands and beaver ponds, ultimately taking in a 270° view of Lake George and the Adirondacks. The preserve's newest trail, the blue trail, leads hikers through more wooded and rugged terrain across the ridgeline from the summit of Thomas to the summit of Cat.

This 1850-acre parcel was acquired by the Lake George Land Conservancy in 2003. Its preservation is a major accomplishment in protecting the Lake George watershed, as one of the lake's larger tributaries, Finkle Brook, flows through the preserve and forms Edgecomb Pond, the drinking water source for Bolton Landing.

In addition to preserving Edgecomb Pond, the Cat and Thomas Mountains Preserve protects the largest tract of contiguous land remaining in Bolton, yet another step in safeguarding the majestic viewshed of Lake George. Enjoy your visit and please come again!



Since 1988, the Lake George Land Conservancy has been working to preserve the world-renowned water quality of Lake George and the rare plants and animals within its 150,000-acre watershed.

Species Encountered at the Cat and Thomas Mountains Preserve

Birds

American Robin	Screech Owl
Black-capped Chickadee	Sharp-shinned
Blue Jay	Hawk
Broad-winged Hawk	White-throated
Downy Woodpecker	Sparrow
Great-horned Owl	Wild Turkey
Ruffed Grouse	Wood Thrush

Insects

Monarch Butterfly	Spring Azure
Mourning Cloak	Tiger Swallowtail



Mammals

Bobcat	Gray Squirrel
Black Bear	Moose
Coyote	Porcupine
Eastern Chipmunk	Raccoon
Fisher	Red Squirrel
Gray Fox	White-tailed Deer

Plants

American Beech	Jack-in-the-Pulpit
American Hemlock	Jewelweed
Black Birch	Pink Ladyslipper
Common Milkweed	Red Maple
Christmas Fern	Red Mulberry
Eastern Hophornbeam	Red Oak
Foamflower	Shagbark Hickory
Fringed Polygala	Striped Maple
Interrupted Fern	White Birch

Reptiles/Amphibians

American Toad	Red Eft
Eastern Garter Snake	Red Spotted Newt
Fowler's Toad	Wood Frog



Preserve Use Guidelines

- Please hike only on the marked trails shown on the enclosed map.
- Please be courteous of other guests at the preserve.
- No unauthorized removal of plants or animals.
- No camping, fires, motorized or non-motorized recreational vehicles of any kind allowed on the preserve.
- Please keep dogs leashed.
- Please park only in the provided lot. If all spaces are full, please come back another time.
- Do not park along the roadway or on any neighboring property.
- Please do not litter. Help keep the preserve clean for all to enjoy.

For information on membership, volunteer opportunities, land protection, and preserving Lake George's unique natural heritage, please contact:



4905 Lake Shore Drive, P.O. Box 1250
Bolton Landing, NY 12814
(518) 644-9673
info@lgc.org
www.lgc.org

Directions to preserve trailhead:
From the Northway (I-87): From Exit 24, head east on County Route 11 for approximately 2 miles. Turn right onto Valley Woods Road. The preserve is about 1/10-mile on the right.



Cat and Thomas Mountains

P R E S E R V E

